

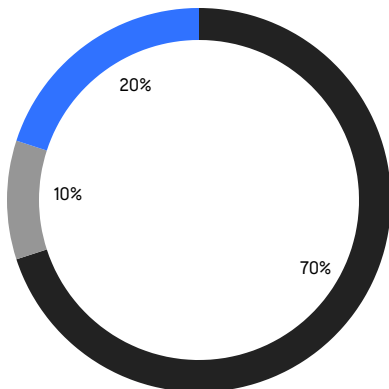
# BROOKLYN WEEKLY LUXURY REPORT



215 EAST 9TH STREET

RESIDENTIAL CONTRACTS  
\$2 MILLION AND UP

- NORTHWEST BROOKLYN
- SOUTH BROOKLYN
- EAST BROOKLYN



10

CONTRACTS SIGNED  
THIS WEEK

\$40,939,000

TOTAL CONTRACT VOLUME

The Brooklyn luxury real estate market, defined as all properties priced \$2M and above, saw 10 contracts signed this week, made up of 3 condos, and 7 houses. The previous week saw 10 deals. For more information or data, please reach out to a Compass agent.

**\$4,093,900**

AVERAGE ASKING PRICE

**\$2,997,500**

MEDIAN ASKING PRICE

**\$1,070**

AVERAGE PPSF

**6%**

AVERAGE DISCOUNT

**\$40,939,000**

TOTAL VOLUME

**332**

AVERAGE DAYS ON MARKET

20 Remsen Street in Brooklyn Heights entered contract this week, with a last asking price of \$11,500,000. Built in the 19th century, this Greek Revival townhouse spans 6,094 square feet with 6 beds and 4 full baths. It features a nearly 26-foot-wide footprint, five stories, a double-door entry, high ceilings, hardwood flooring, custom millwork, marble mantels, shuttered windows, multiple wood-burning fireplaces, a kitchen with custom cabinetry and black granite countertops, a private rooftop deck, and much more.

Also signed this week was 916 President Street in Park Slope, with a last asking price of \$5,400,000. Built in 1905, this townhouse spans 7,037 square feet with 7 beds and 4 full baths. It features bay windows on every floor, wood and stained glass details and original features, high ceilings, built-in cabinetry, wood floors, a full-height basement, a 20-foot-wide footprint, multiple fireplaces, and much more.

**3**

CONDO DEAL(S)

**0**

CO-OP DEAL(S)

**7**

TOWNHOUSE DEAL(S)

**\$3,080,000**

AVERAGE ASKING PRICE

**\$0**

AVERAGE ASKING PRICE

**\$4,528,429**

AVERAGE ASKING PRICE

**\$2,495,000**

MEDIAN ASKING PRICE

**\$0**

MEDIAN ASKING PRICE

**\$3,500,000**

MEDIAN ASKING PRICE

**\$1,129**

AVERAGE PPSF

**\$1,045**

AVERAGE PPSF

**2,842**

AVERAGE SQFT

**4,259**

AVERAGE SQFT





### 20 REMSEN ST

Brooklyn Heights

TYPE	TOWNHOUSE	STATUS	CONTRACT	ASK	\$11,500,000	INITIAL	\$11,500,000
SQFT	6,094	PPSF	\$1,888	BEDS	6	BATHS	4
FEES	\$3,155	DOM	486				



### 916 PRESIDENT ST

Park Slope

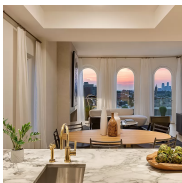
TYPE	TOWNHOUSE	STATUS	CONTRACT	ASK	\$5,400,000	INITIAL	\$5,400,000
SQFT	7,037	PPSF	\$768	BEDS	7	BATHS	4.5
FEES	\$1,552	DOM	59				



### 442 CLINTON AVE

Clinton Hill

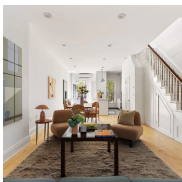
TYPE	TOWNHOUSE	STATUS	CONTRACT	ASK	\$4,850,000	INITIAL	N/A
SQFT	3,314	PPSF	\$1,464	BEDS	4	BATHS	4.5
FEES	\$1,186	DOM	N/A				



### 243 4TH AVE #PH11

Park Slope

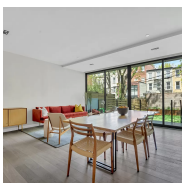
TYPE	CONDO	STATUS	CONTRACT	ASK	\$4,295,000	INITIAL	\$4,500,000
SQFT	3,225	PPSF	\$1,332	BEDS	5	BATHS	4.5
FEES	\$4,884	DOM	699				



### 287 HOYT ST

Carroll Gardens

TYPE	TOWNHOUSE	STATUS	CONTRACT	ASK	\$3,500,000	INITIAL	\$3,500,000
SQFT	2,600	PPSF	\$1,347	BEDS	5	BATHS	2
FEES	\$577	DOM	76				



### 101 DOUGLASS ST #1

Boerum Hill

TYPE	CONDO	STATUS	CONTRACT	ASK	\$2,495,000	INITIAL	\$2,695,000
SQFT	1,864	PPSF	\$1,339	BEDS	1	BATHS	2.5
FEES	\$1,584	DOM	257				

Compass is a licensed real estate broker and abides by Equal Housing Opportunity laws. All material presented herein is intended for informational purposes only. Information is compiled from sources deemed reliable but is subject to errors, omissions, changes in price, condition, sale, or withdrawal without notice. No statement is made as to the accuracy of any description. All measurements and square footages are approximate. This is not intended to solicit property already listed. Nothing herein shall be construed as legal, accounting or other professional advice outside the realm of real estate brokerage.



### 160 IMLAY ST #6A2

Red Hook

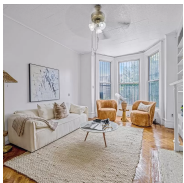
TYPE	CONDO	STATUS	CONTRACT	ASK	\$2,450,000	INITIAL	\$3,100,000
SQFT	3,436	PPSF	\$714	BEDS	4	BATHS	5
FEES	\$5,366	DOM	807				



### 1951 EAST 19TH ST

Homecrest

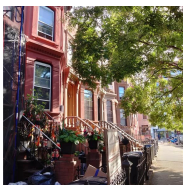
TYPE	MULTIHOUSE	STATUS	CONTRACT	ASK	\$2,299,000	INITIAL	\$2,499,000
SQFT	3,022	PPSF	\$761	BEDS	6	BATHS	3.5
FEES	\$665	DOM	314				



### 134 RUTLAND RD

Prospect Lefferts Gardens

TYPE	TOWNHOUSE	STATUS	CONTRACT	ASK	\$2,150,000	INITIAL	\$2,495,000
SQFT	4,320	PPSF	\$498	BEDS	5	BATHS	3
FEES	\$426	DOM	214				



### 15 VERONA PL

Bedford Stuyvesant

TYPE	TOWNHOUSE	STATUS	CONTRACT	ASK	\$2,000,000	INITIAL	\$2,000,000
SQFT	3,420	PPSF	\$585	BEDS	N/A	BATHS	N/A
FEES	\$493	DOM	70				

Compass is a licensed real estate broker and abides by Equal Housing Opportunity laws. All material presented herein is intended for informational purposes only. Information is compiled from sources deemed reliable but is subject to errors, omissions, changes in price, condition, sale, or withdrawal without notice. No statement is made as to the accuracy of any description. All measurements and square footages are approximate. This is not intended to solicit property already listed. Nothing herein shall be construed as legal, accounting or other professional advice outside the realm of real estate brokerage.